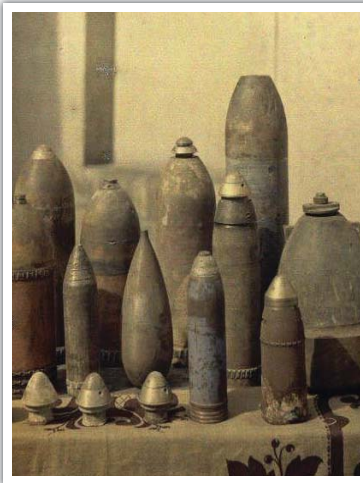


Shell dismantling



The goal of the identification is to determine the type of shell and the state of its internal structure.

The knowledge of these two information are fundamental to choose the appropriate destroying procedure, especially when chemical products are suspected.

X-rays are able to penetrate materials like iron, water, chemical products, plastics etc.



X-rays will be absorbed in these materials according to their thickness and own absorption capabilities.

The presence of toxic liquid is highlighted by tilting the shell. The fluid level remains horizontal and is visible to X-ray.

Balteau completely developed and manufactured 2 different types of installation for the identification of shells.

MOBILE UNIT INSTALLED ON A TRUCK

One light and mobile laboratory, installed on a truck and able to be moved from one site to another one.

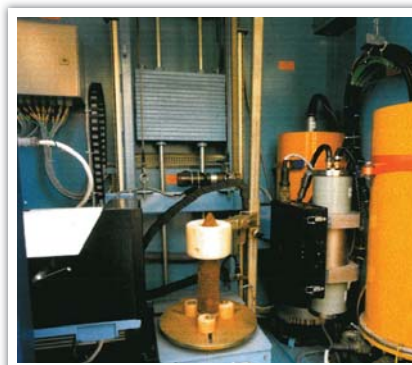


This mobile unit will give the shell demolition squads the capacity to transport an identification laboratory on different sites.

It is mainly used for sites having small ammunition dumps or when the shells are in so bad conditions that their transportation to another location is dangerous.

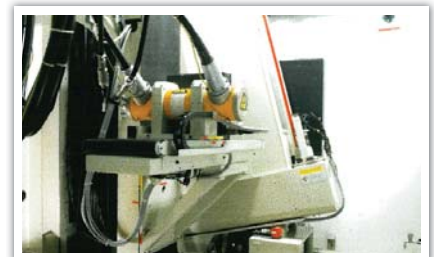
This mobile unit consists of :

- One 19-ton truck
- A X-ray generator
- A real time X-ray detector
- A manipulator allowing to move up and down both X-ray generator and detector.
- Possibility to rotate the ammunition around its vertical axis.
- A control unit
- « Inspection Suite » software by Balteau (see brochure for more information)
- An air conditioning system
- A 220V alternator providing the required power for the equipment.



STATIONARY INSTALLATION

One more sophisticated installation, designed for the integration into full automatic dismantling systems.



This stationary installation is designed for being integrated in a complete automatic line for dismantling shells.

Such installation will take place in a building located close to a very important stock of ammunition.

This installation consists of :

- A X-ray generator
- A real time X-ray detector
- A manipulator allowing to move the shell in the 2 horizontal directions, to tilt the shell displaying a possible liquid and to rotate the shell around its vertical axis.
- A manipulator allowing to move up and down both X-ray generator and detector.
- The input conveyor keeps the shell in a flexible chemical proof enclosure. In case of chemical leakage, it will limit the contaminated area to clean.
- « Inspection Suite » software by Balteau (see brochure for more information)

