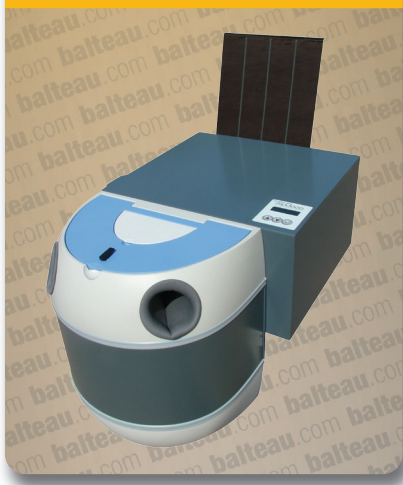


ACCESSORIES **APU3000**



**ADVANTAGES**

- No darkroom necessary (An optional lightproof loader)
- Optional machine stand
- Self-draining Cycle
- Self-cleaning Cycle
- Replenishment Cycle

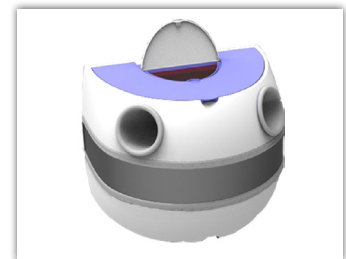
*The APU 3000 sets the standard for quality, consistency and ease of use in x-ray film processing.*

*The proposed combination of reliable performance, rapid throughput, daylight processing, simple operation, minimal maintenance, compact dimensions and flexibility in films and chemistry is unrivalled.*

*The APU 3000 processing is the cost effective choice for each x-ray film developer.*

**CHARACTERISTICS**

- Patented film transport system
- Flexibility of films and chemistry (Films of different size and type can be processed)
- Deep tanks providing long film path
- Modular construction for low maintenance
- Visual warning of low chemicals & fail-safe shutdown if depletion reaches critical levels
- Rapid processing: dry radiographs in 3 min.
- Fully automatic processing
- Pumped chemical recirculation system
- It allows the continuous loading in random order of x-ray films
- Water flow controlled automatically



**Misc.**

- Maximum film width: 355mm
- Tank capacities: 4 liter (each)
- Warming-up time: Approx. 15 min.
- Processing time: 3 (2 available)

**Specifications**

**Units**

ACCESSORIES **APU3000**

Processing unit - Empty:	kg	40
Processing unit - Full:	kg	70
Stand:	kg	24,8
Total:	kg	94,8
Mains:	V	220-240
Frequency:		50-60
Water supply:	Bar	1,8
Flow rate:	l/min	2

**Contact details**

**Balteau NDT**

Rue Voie de Liège, 12  
B-4681 Hermalle Sous Argenteau  
Belgium

www.balteau.com  
balteau@balteau.com  
Tel. +32 (0) 4 374 75 75  
Fax +32 (0) 4 374 75 85

**Distributed by:**

