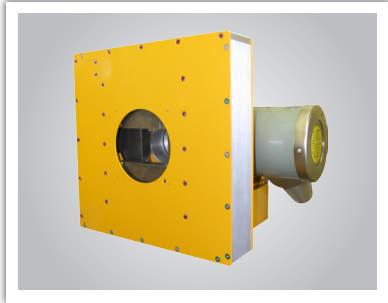


BALTOMATIC CLMT

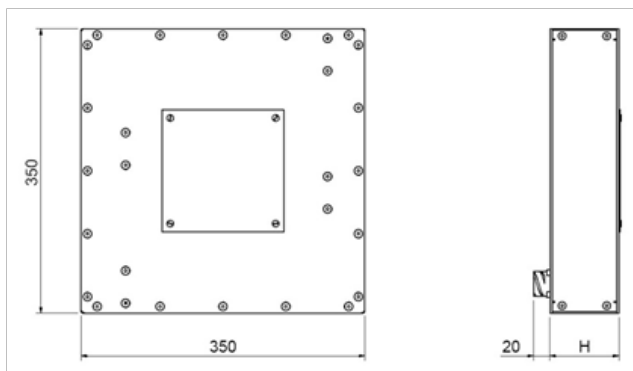


X-ray beam size and shape is defined by the inherent construction of the Tube. The way the target is positioned, the shielding and housing designs are largely influencing the beam cone, but this is fixed and sometimes not adequate to the imaging detector or Shielding environment. The use of a collimator is then very useful when you want to precisely control the cone shape and extent.

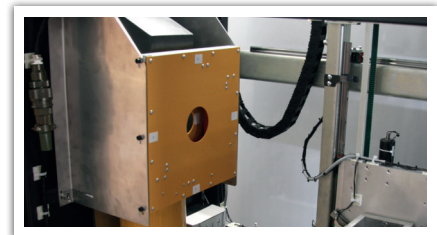
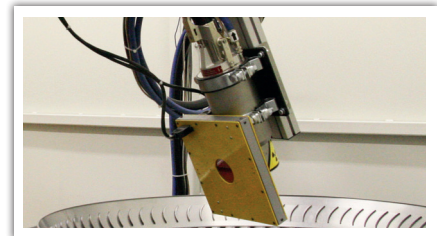
The collimator acts as a mobile window reducing or defining the limits of the beam to the detector sizes or portion of area to be covered.

Made out of highly absorbing material, shutters are remotely moved with electric motors operated from the control room.

MECHANICAL DRAWING



Collimator height (H*) depends on lead shutter thickness Lead shutter thickness depends on the X-ray tube



Independent or dependent shutters

Up to 4 shutters can be placed into the Collimator. Shutters can be moved 2 to 2, or independently to create a decentralized window if needed.

Shutters are made out of lead and the thickness is calculated to be corresponding to the tube type and current. Shutters are operated through icons from a computer with the help of a Software module that is to be integrated into Systems.

Robust and reliable

Only High grade components are used to provide long time and reliable operations. Shutters are designed to also provide sufficient shielding thicknesses for preheating operations. All plates are assembled by screws and bolts to provide the user with service possibilities if needed.

The Maximum possible shutter opening allows a maximum beam penetration.

Universal

Our collimators can be assembled on the majority of tubes available in the Industry with few or no adaptations. The control unit is simple and rack mounted for systems integration. It can be replaced by a Bay model integrated into the Image Intensifier module.

Operating system

- Lead shutter edge machined (perfect contact)
- Lead shutter driven by DC motors (with driver)*
- 2 mm Al filter fixed (with a screw) on the front side

Control unit **

- Mains : 230 VAC (+/-10%)
- Frequency : 50/60 Hz
- Consumption : 2 A
- Rack box size : 19 inches - 3 U
- Collimator/Control Unit connection cable length : 20 m

Combinations

- 4 lead shutters - 4 motors : CLMT-4-4
- 4 lead shutters - 2 motors : CLMT-4-2
- 2 lead shutters - 2 motors : CLMT-2-2
- 2 lead shutters - 1 motor : CLMT-2-1

OPTIONAL EQUIPMENT

- Position encoder for the lead shutters
- Other front filter material
- Other cable lengths

Balteau NDT

Rue Voie de Liège, 12
B-4681 Hermalle Sous Argenteau
Belgium

www.balteau.com
balteau@balteau.com
Tel. +32 (0) 4 374 75 75
Fax +32 (0) 4 374 75 85